

# What are the after effects of a volcano erupting?

1. Famine
2. Disease
3. Discoloured snow
4. Continual fog

# What are the after effects of a volcano erupting?

1. Famine
2. Disease
3. Discoloured snow
4. Continual fog



# Volcanoes &



# Tsunamis

# Volcanoes



# Volcanoes

- A volcano is a rupture in the crust of the Earth.
- Hot lava, volcanic ash and gases escape from the magma chamber below the surface.



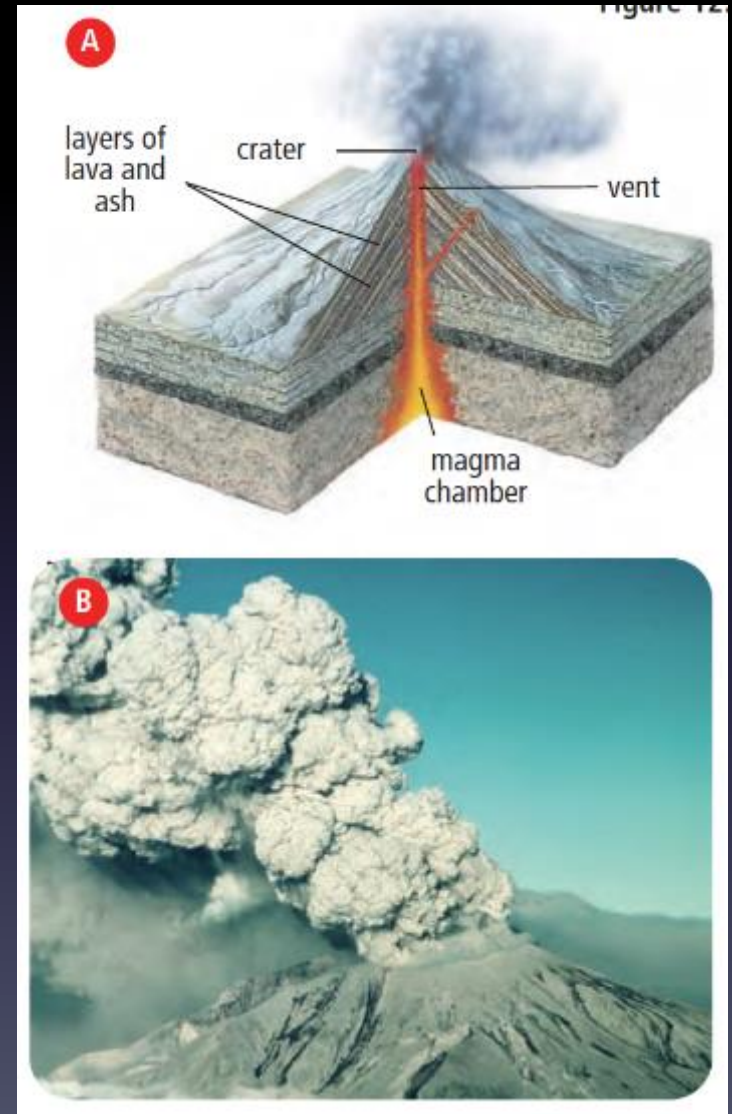
# Volcanoes

- The movement of tectonic plates produces three types of volcanoes:
  - Composite volcanoes
  - Shield volcanoes
  - Rift eruptions



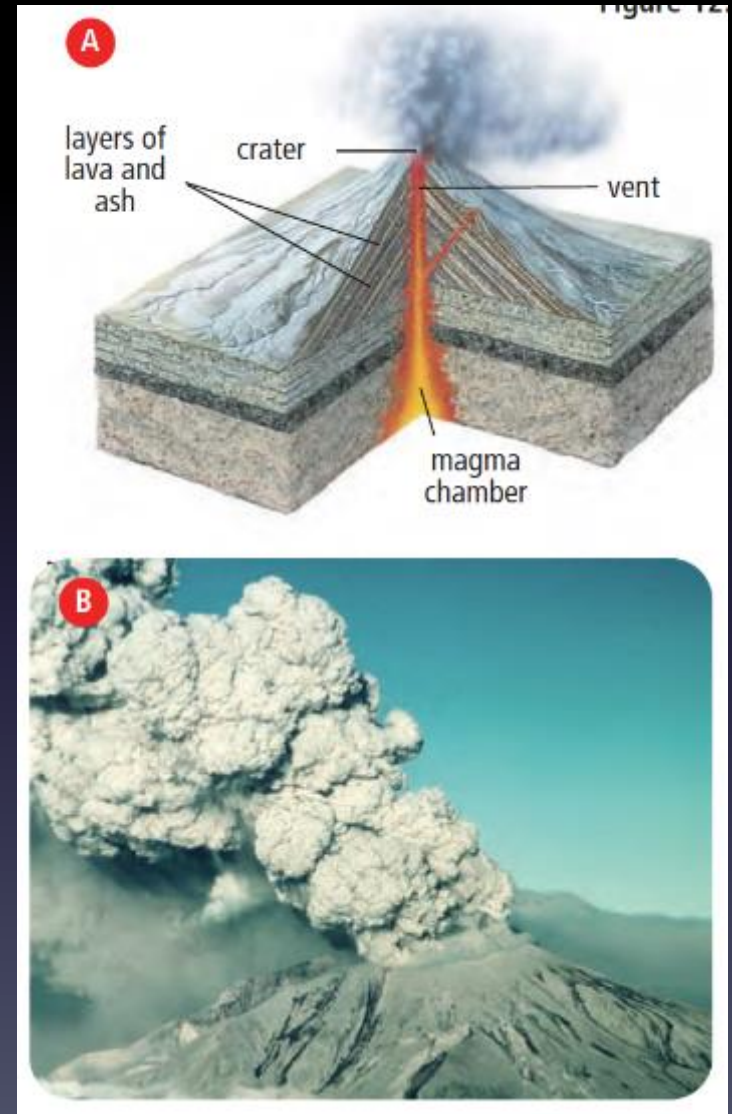
# Composite Volcanoes

- A large, cone-shaped mountain, belching ash, rocks and lava.
- Cone shape results from repeated eruptions of ash and lava.
- Usually found near subduction zones.
- Ex. Mount Garibaldi in British Columbia



# Composite Volcanoes

- [Plate Tectonics](#)





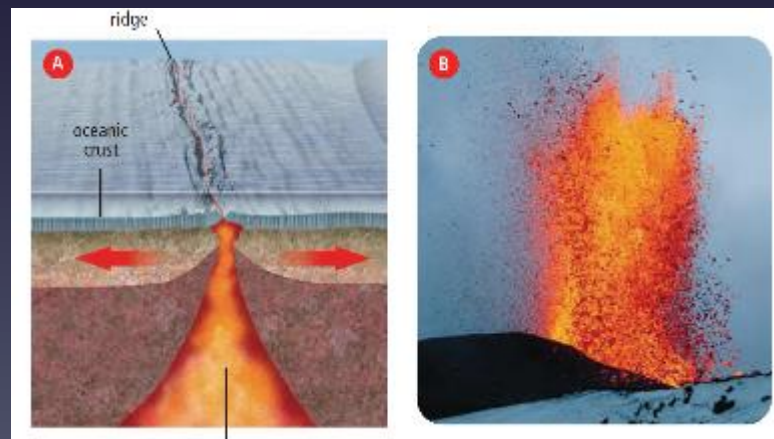
# Shield Volcanoes

- Largest volcanoes on Earth.
- Do not occur at plate boundaries but instead form over hot spots – a weak part of the crust where magma breaks through.
- Less explosive than composite volcanoes.
- Ex. Hawaiian Islands



# Rift Eruptions

- Magma erupts through long cracks in the crust.
- Not usually very explosive or violent but can release enormous amounts of lava.
- Common along the Mid-Atlantic Ridge



# Volcanoes

- [Top 5 Volcanoes](#)

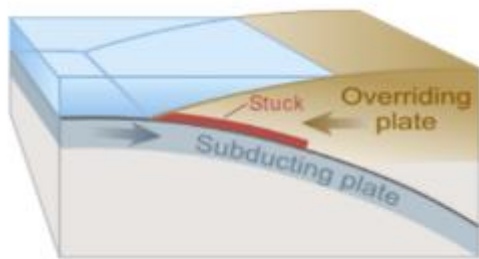
# Tsunamis

- [How Tsunamis Work](#)

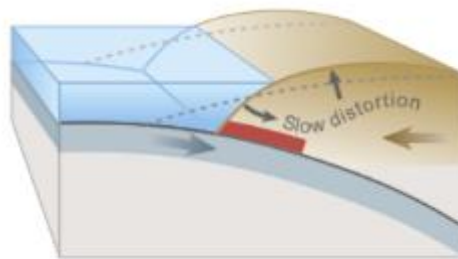


# Tsunamis

- A tsunami is a series of water waves in a body of water.
- Generated when the sea floor deforms and abruptly moves the water.



Drawing of tectonic plate boundary before earthquake



Overriding plate bulges under strain, causing tectonic uplift.

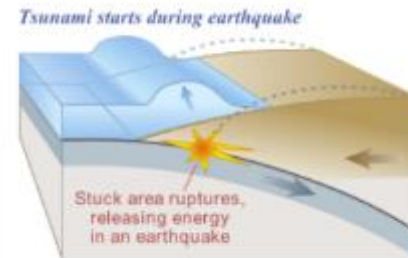
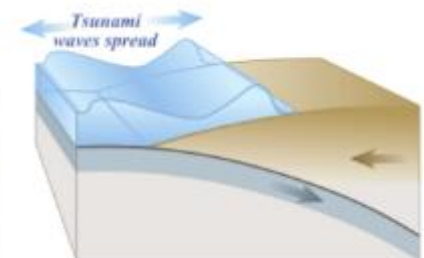


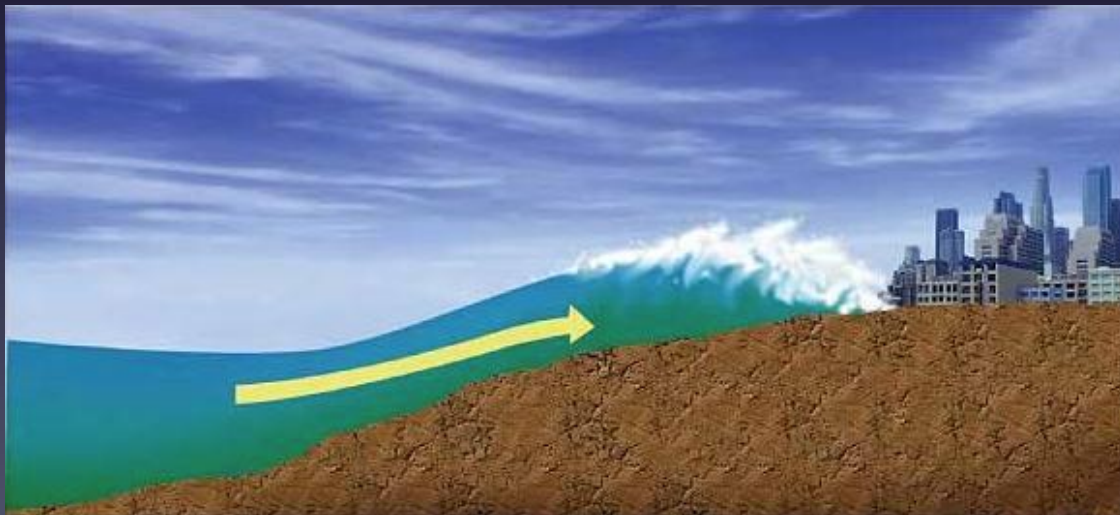
Plate slips, causing subsidence and releasing energy into water.



The energy released produces tsunami waves.

# Tsunamis

- Tsunamis do not resemble normal sea waves because their wavelength is far longer.
- When the wave enters shallow water, it slows down and its amplitude (height) increases.





# Tsunamis

- [How Earthquakes Trigger Tsunamis](#)