

# **CELL THEORY**



# **CELL THEORY**

## **The Wacky History of Cell Theory**



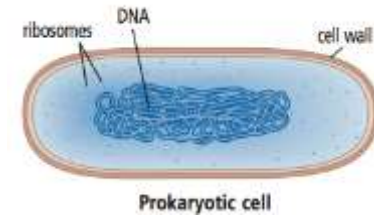
# **CELL THEORY**

- 1. The cell is the basic unit of life.**
- 2. All organisms are composed of one or more cells.**
- 3. All cells come from other living cells.**

# GROUPS OF CELLS

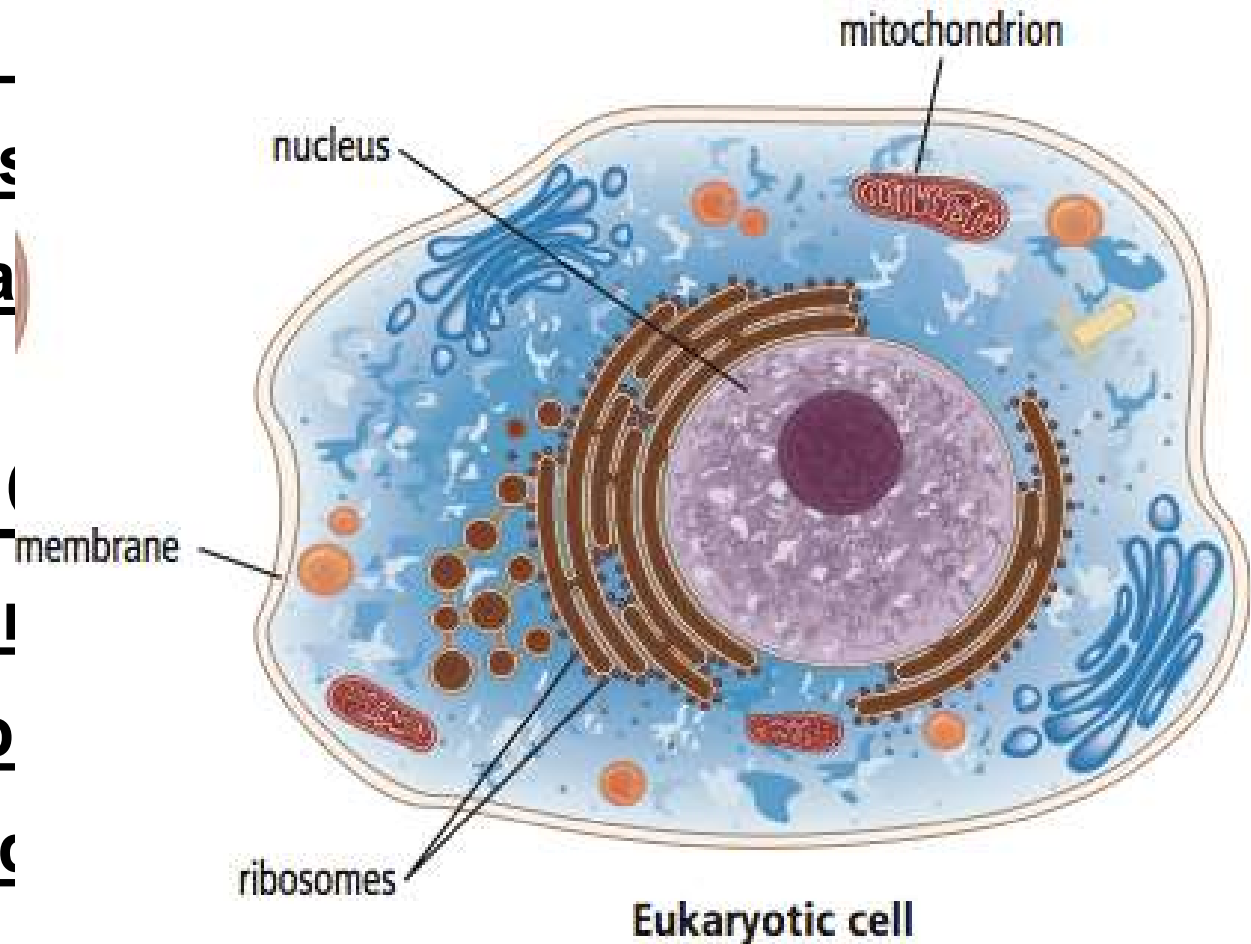
## Prokaryotic Cells

- Simple and
- DNA is not s
- Ex. bacteria



## Eukaryotic Cells

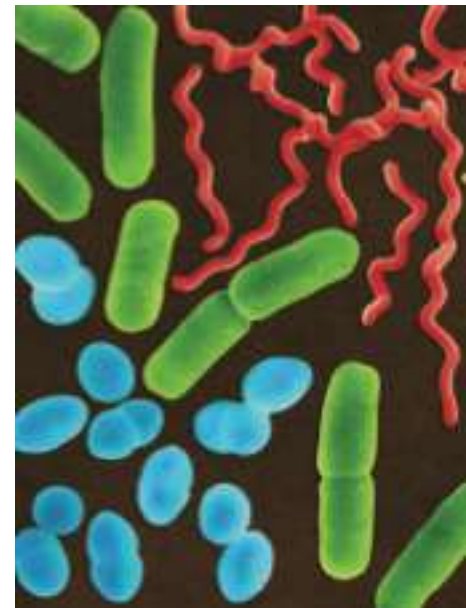
- Complex and
- DNA is sep
- Ex. you and



# GROUPS OF CELLS

## Prokaryotic Cells – Bacteria!

- Can be both harmful and helpful to humans
- Harmful: E. coli, Salmonella
- Helpful: probiotics
- Three different shapes:
  1. Spirals
  2. Rods
  3. Spheres



# **WHICH OF THE FOLLOWING IS MADE DUE TO TYPES OF BACTERIA?**

- 1. Chocolate**
- 2. Cheese**
- 3. Soy Sauce**
- 4. Kombucha**
- 5. Kimchi**

# WHICH OF THE FOLLOWING IS MADE DUE TO TYPES OF BACTERIA?

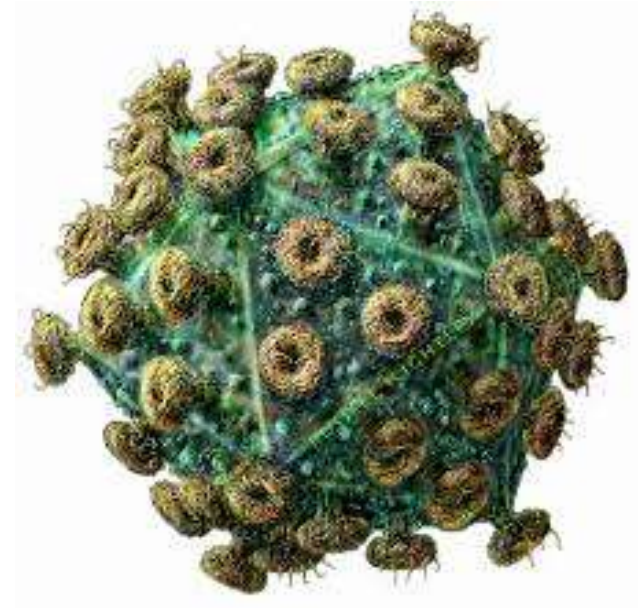
1. Chocolate
2. Cheese
3. Soy Sauce
4. Kombucha
5. Kimchi

[https://www.youtube.com/watch?v=9yswzITbAbA&ab\\_channel=MinuteEarth](https://www.youtube.com/watch?v=9yswzITbAbA&ab_channel=MinuteEarth)

# GROUPS OF CELLS

## Viruses

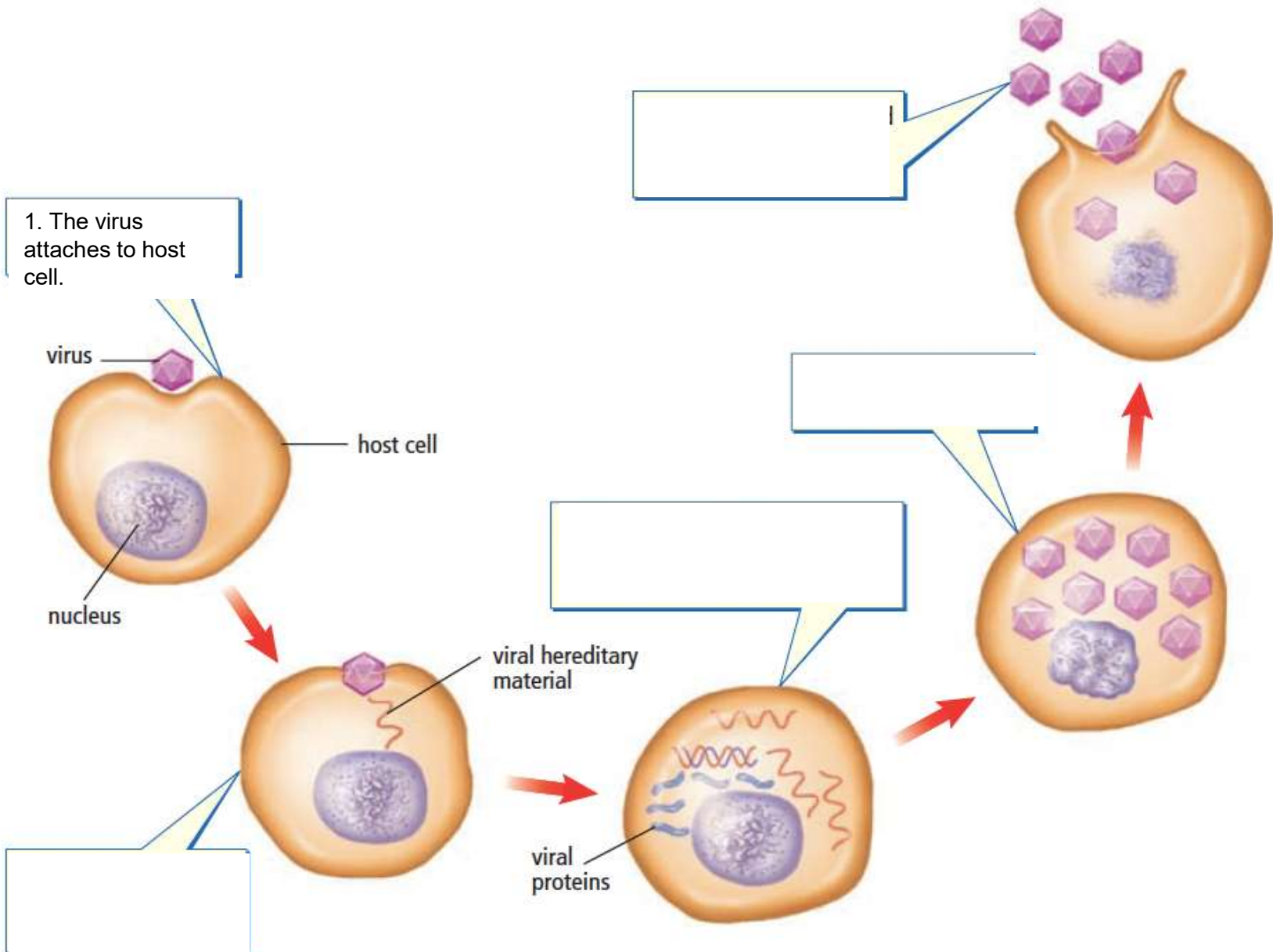
- Non-living particles
- Causes chicken pox, flu
- Must have a living cell (host cell) to help it to reproduce



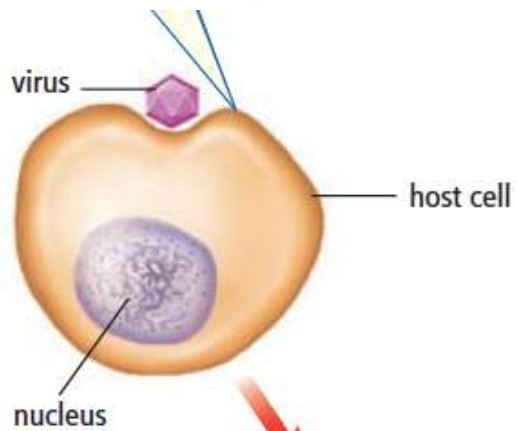
HIV



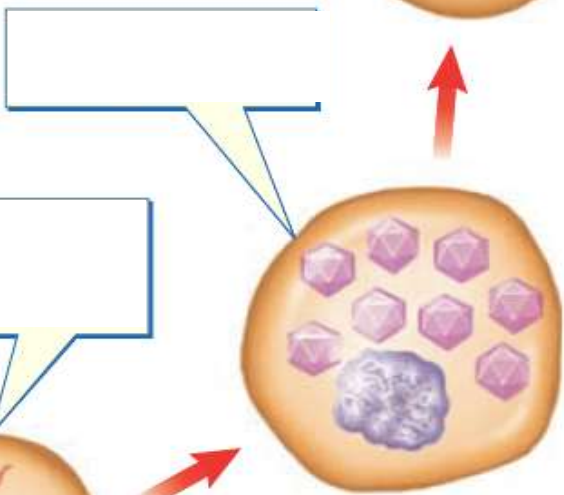
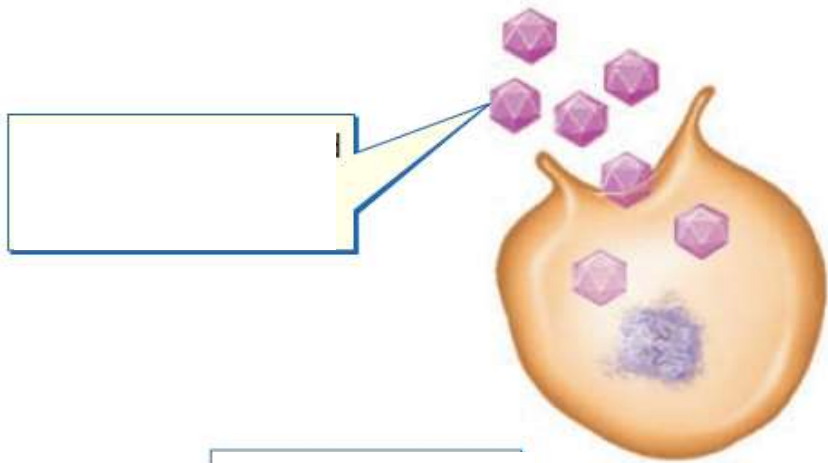
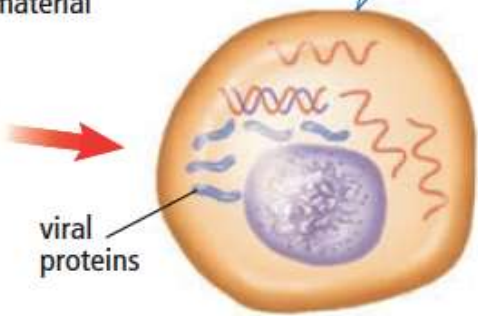
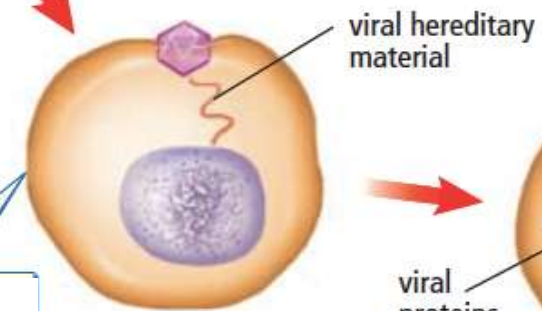
1. The virus attaches to host cell.



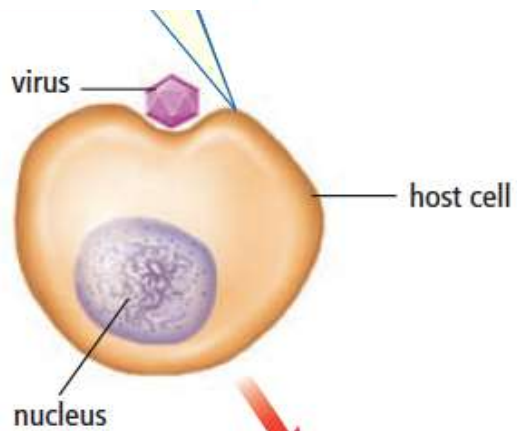
1. The virus attaches to host cell.



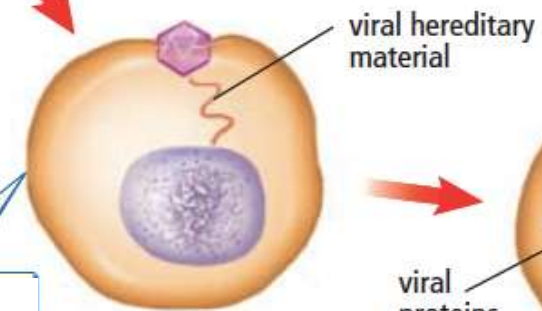
2. Virus inserts genetic material into host cell.



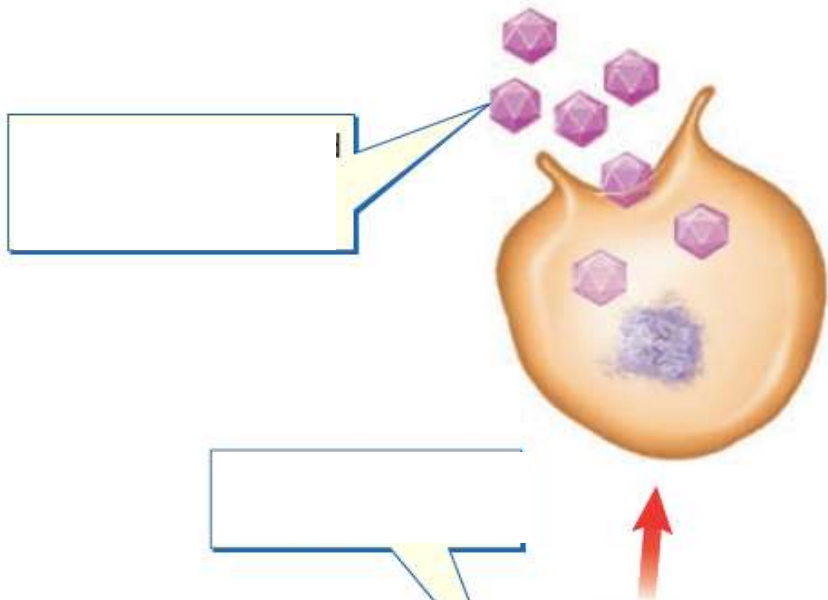
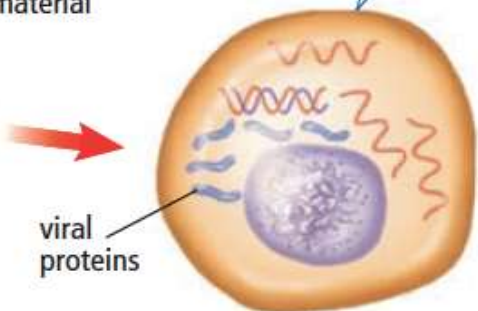
1. The virus attaches to host cell.



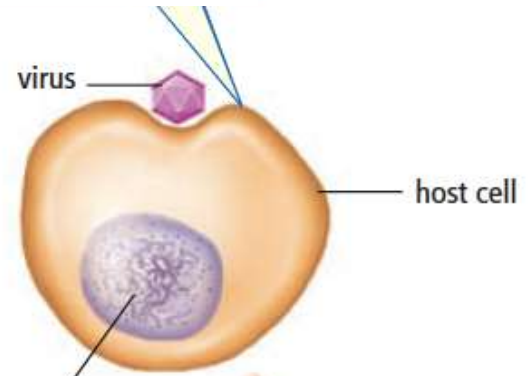
2. Virus inserts genetic material into host cell.



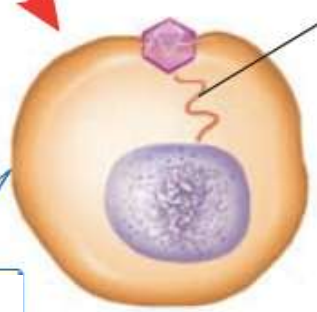
3. The host cell makes viral material



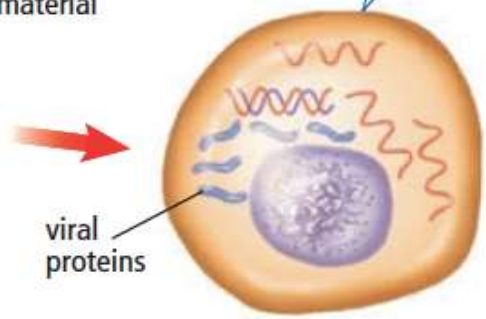
1. The virus attaches to host cell.



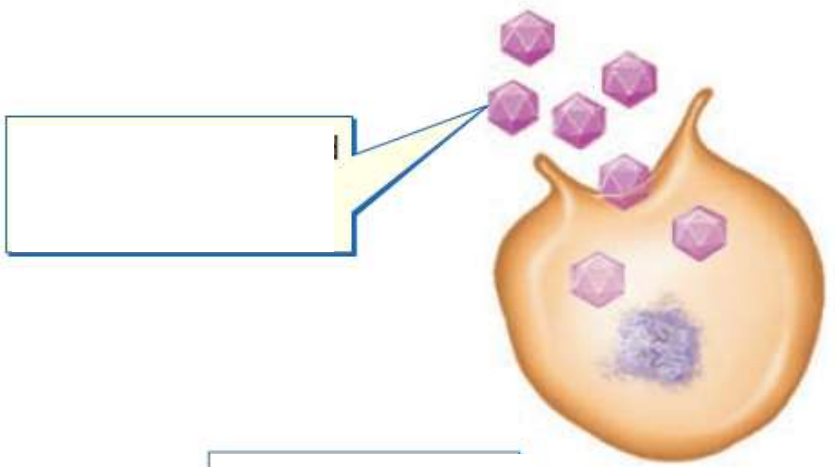
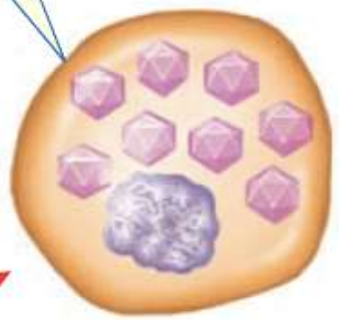
2. Virus inserts genetic material into host cell.



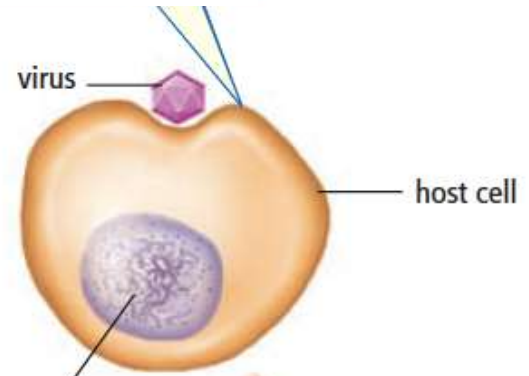
3. The host cell makes viral material.



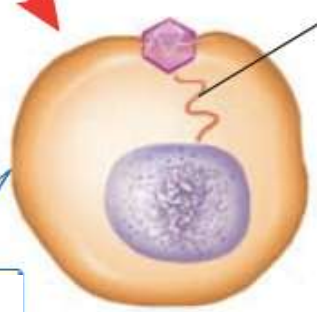
4. New viruses form inside host cell.



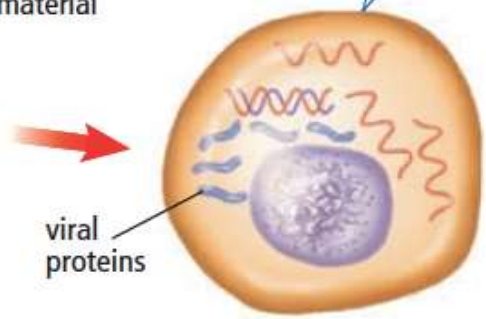
1. The virus attaches to host cell.



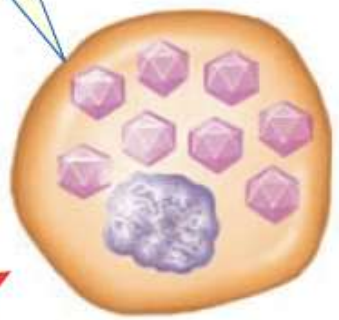
2. Virus inserts genetic material into host cell.



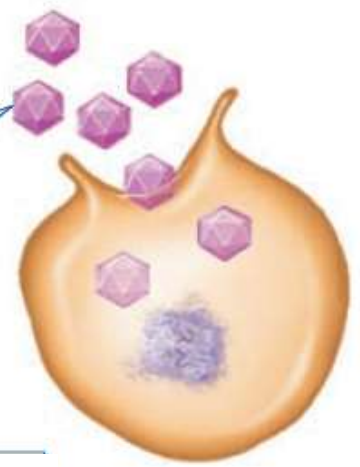
3. The host cell makes viral material.



4. New viruses form inside host cell.



5. New viruses are released as host cell is destroyed.



# CELL VS VIRUS

[https://www.youtube.com/watch?v=oqGuJhOeMek&ab\\_channel=TED-Ed](https://www.youtube.com/watch?v=oqGuJhOeMek&ab_channel=TED-Ed)