

## Question of the day

► Which of the following animals have been successfully cloned?

1. A Sheep
2. A cat
3. A cow
4. All of the above
5. None of the above

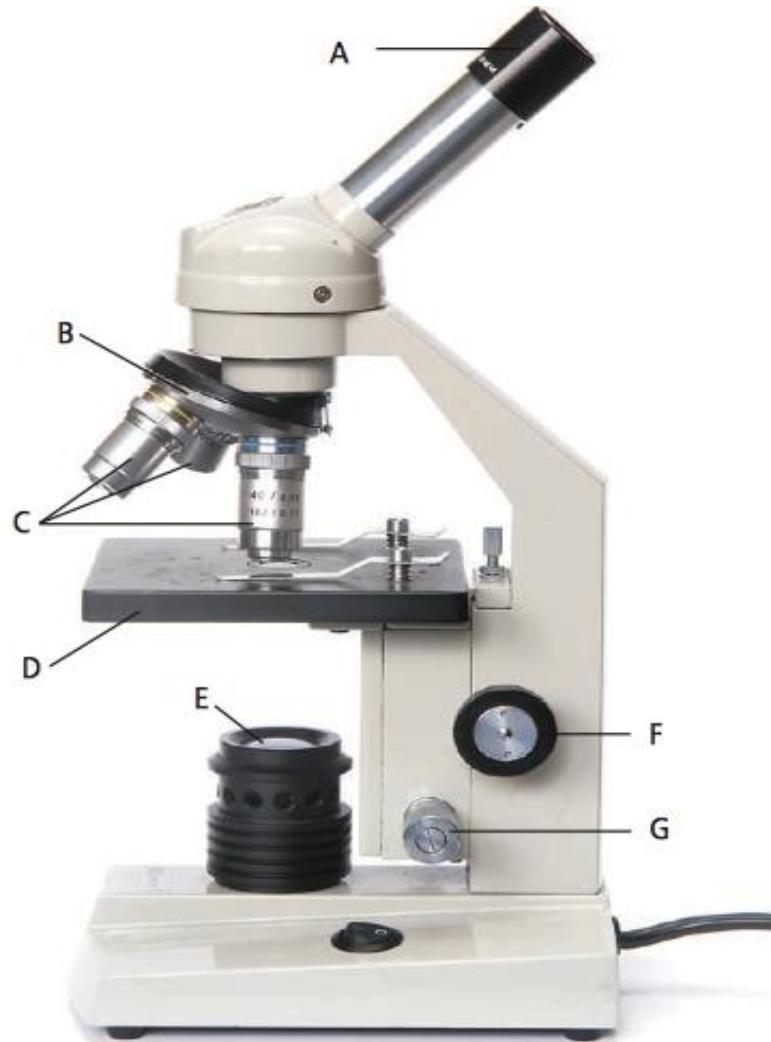
## Question of the day

▶ Which of the following animals have been successfully cloned?

1. A Sheep
2. A cat
3. A cow
4. All of the above
5. None of the above

# Microscope Lab

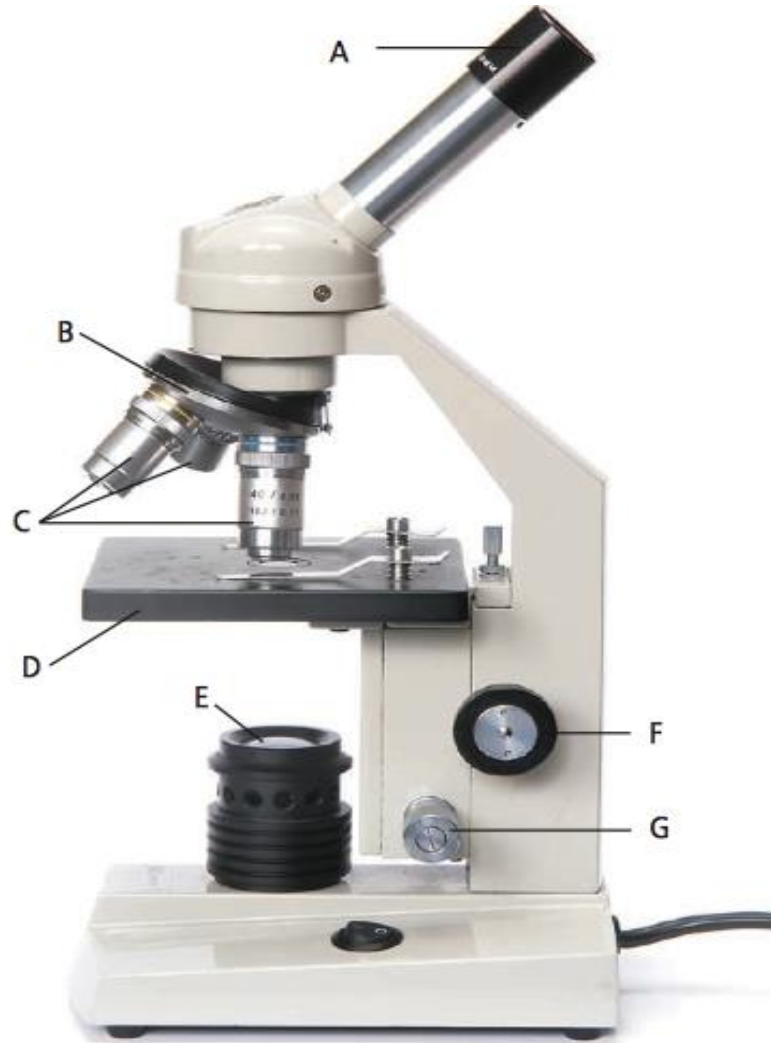
# Parts of a *Microscope*



## Word Bank:

- Stage
- Revolving nose piece
- Light source
- Fine focus knob
- Eyepiece
- Coarse focus knob
- Objective lens

# Parts of a *Microscope*



A: Eyepiece

B: Revolving nose piece

C: Objective lens

D: Stage

E: Light source

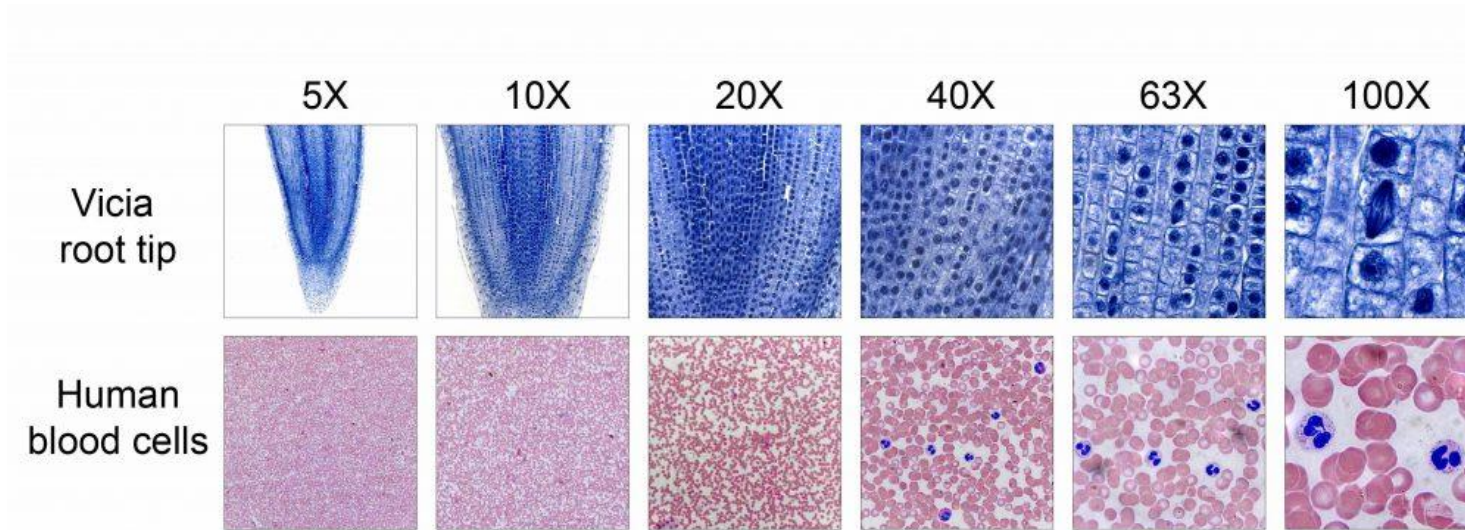
F: Coarse focus knob

G: Fine focus knob

# Magnification

## ► Magnification:

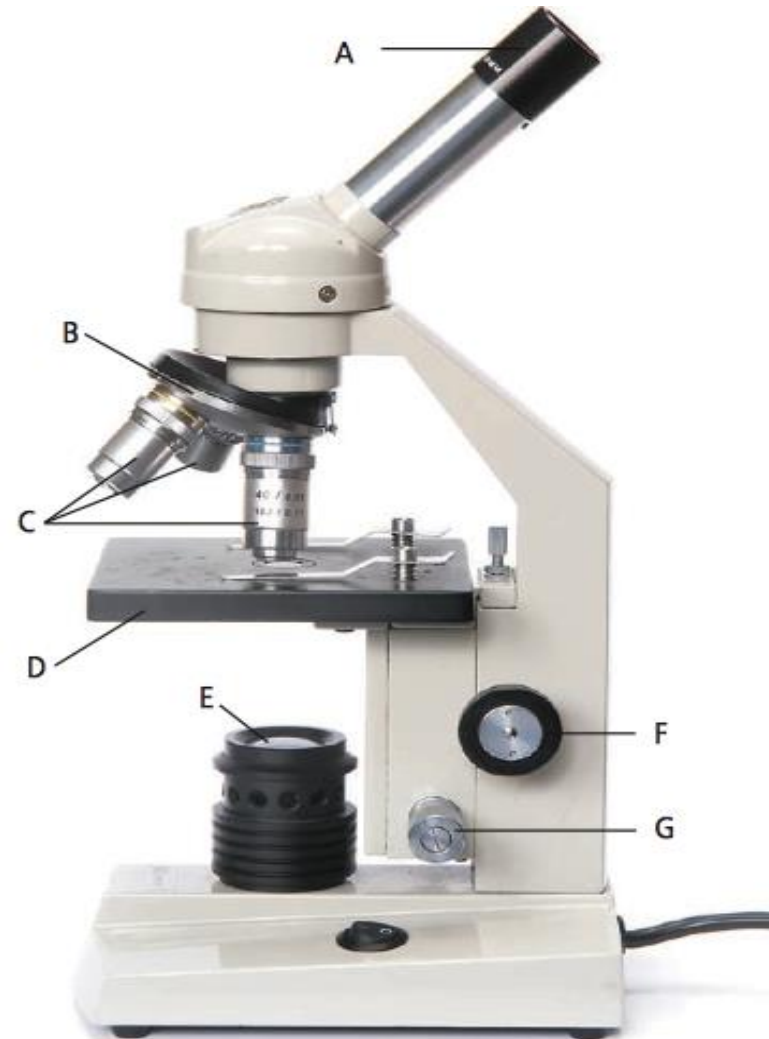
- Degree of visual enlargement of an observed object
- The microscopes we will be using are 10x (medium) or 40x (high) magnification



What are the magnifications we will be using today?

# Carrying a Microscope

- ▶ One hand on the arm, one hand under the base



# Microscope care

- ▶ Be careful with the microscope and the slides and do not damage them in any way
- ▶ When on high (40x) magnification, only use the **fine focus knob**
- ▶ Once you are finished using the microscope, please unplug it by **pulling on the plug and not the wire**
- ▶ Wrap the wire around the microscope base and place the protective cover over it.
- ▶ Return all slides once you are finished looking and drawing

Which focus knob do you use when on high magnification?

How do you unplug a microscope?



# Microscope Slides

- ▶ They are made of glass so be careful when handling them
- ▶ Watch out for the edges! They are sharp
- ▶ Please only hold them by the edges, do not hold them where the specimen is



# Safety!

- ▶ If you drop and break a microscope slide, **DO NOT touch the broken glass!**
- ▶ Get a broom and dustpan and sweep it up
- ▶ Inform the teacher and dispose of the slide into the broken glass bucket